



*Southern Nevada*  
Community Health Improvement Plan



— June 2016 —



# Southern Nevada Community Health Improvement Plan

Adele Solomon

Southern Nevada Health  
District

November 16, 2016



CHIPping Away at Health Disparities  
[www.HealthySouthernNevada.org](http://www.HealthySouthernNevada.org)

# Three Priorities



Access to Care



Chronic Disease



Policy and Funding



# Policy and Funding -Dec 13<sup>th</sup> 2-4pm

## Support

- Health in All Policies- 5 key elements
  - ▣ CHIP is HiAP- intersectoral collaboration, promote equity, benefit multiple partners, engage stakeholders, create process change
- Health Equity
  - ▣ Data to look for disparities and gaps
- Policy Change
  - ▣ Collaborative for legislature
- Chronic Disease
  - ▣ Tracking & promoting
- Access to Care
  - ▣ Data reports, messaging



# Chronic Disease

Multiple community programs that

- Address Obesity
  - ▣ Increase fruits and vegetables
  - ▣ Increase activities
  - ▣ Decrease sweet drinks
- Address tobacco
  - ▣ Encourage quitting
  - ▣ Don't start campaigns
  - ▣ Address e-cigarettes



# Access to Care- Dec 14<sup>th</sup> 2-4pm

- 911 nurse call line
  - ▣ Pilot study funded
  - ▣ Looking to expand rural communities
  - ▣ Linkage to 211
  - ▣ Linkage to social services & nurse visits
- Provider shortages & transportation
  - ▣ Address identified shortages
  - ▣ Address transportation
- Insurance
  - ▣ Address gaps
  - ▣ Improve equity



# Successes since August 2016

- Agencies work for shared messaging for legislative session
- Universities supporting extra work through students
- 500 members over 100 on each priority
- 1.6 m funding for pilot study
- CDC associate for 2 years
- Being approach by other universities and agencies



# Why does it work

What do the partners want for their community?

- Make a difference
- Reach more people

What do the partners want for their agency?

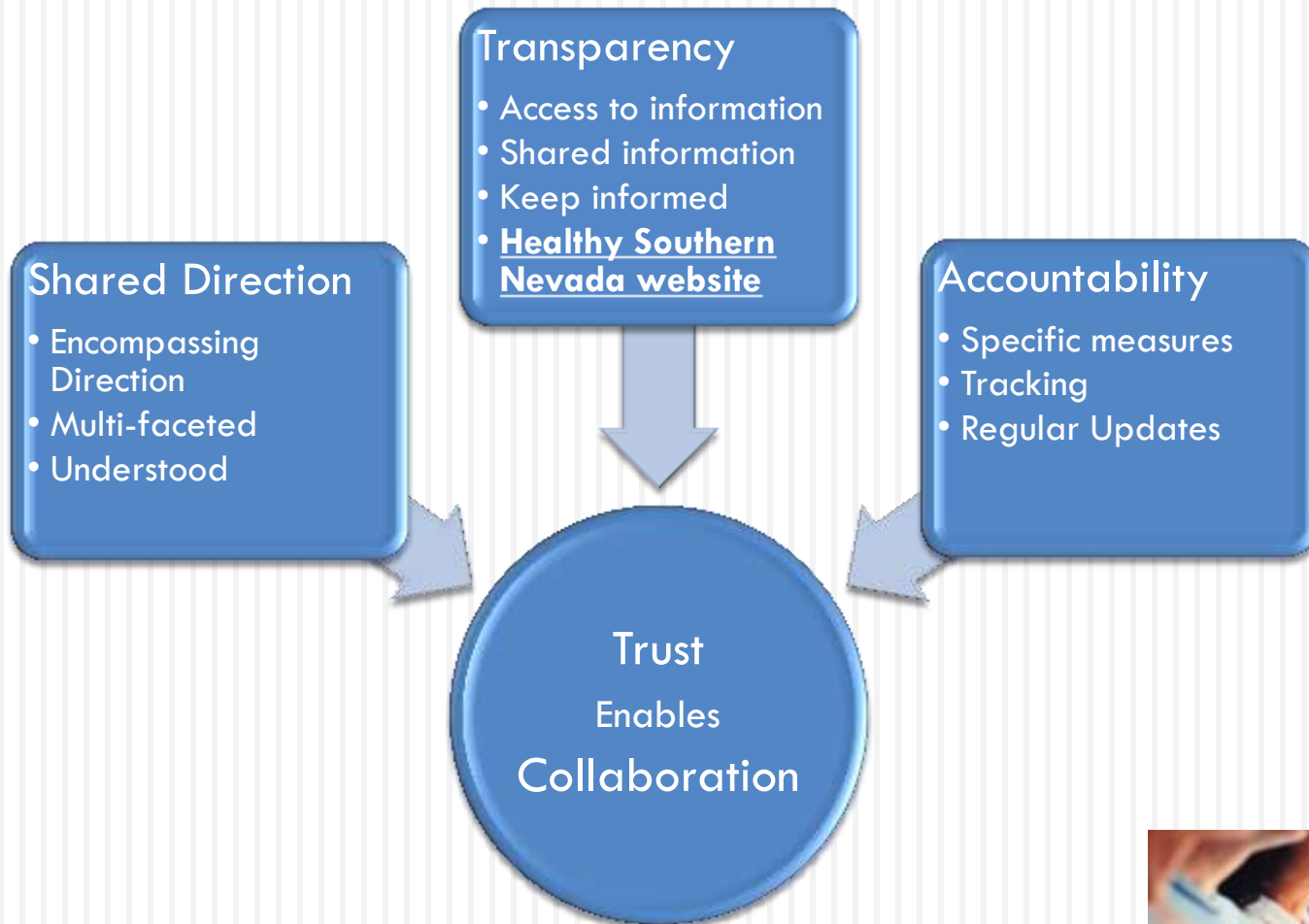
- Do more with less
- Increase financial sustainability

What do you want from the partners?

- Clarify
- Give ideas
- Support partners- capability & capacity



# Ensure there is





# Keep it moving



# Next steps

- ❑ Health Equity Assessment
- ❑ Health Equity Report
- ❑ Improve gap identification
- ❑ Improve program support
- ❑ Expand to **All** of Southern Nevada (Clark, Lincoln, Nye, Esmeralda)
- ❑ Encourage all program to address above

