

National Rural Health Day

Celebrating the **Power of Rural!**®



Key Messages & DATA POINTS

KEY MESSAGE

Rural America is fueling an innovative rural health infrastructure.

Roughly **1,300** and **900**

Critical Access Hospitals (CAH) other rural hospitals



support the acute care landscape of rural communities.ⁱ

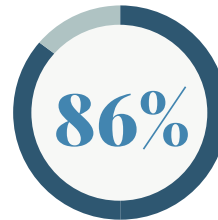


More than **5,200** Rural Health Clinics and over **4,600** rural health centers or health center look-alikes

provide the backbone of the primary care infrastructure in rural America.ⁱⁱ



Rural Health Clinics are a key component of the rural health safety net, with

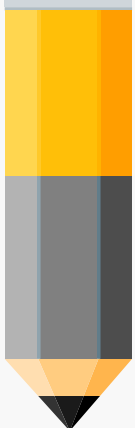


Offering free or reduced-cost care, and



Accepting new Medicaid or state CHIP patients.ⁱⁱⁱ

LOCAL HEALTH DEPARTMENTS



50% of rural Local Health Departments (LHDs)

report operating school-based health clinics, and are more likely than urban LHDs to provide an array of services, including: child and adult immunizations, maternal and children's health services, behavioral and mental health care, and home health care.^{iv}

KEY MESSAGE

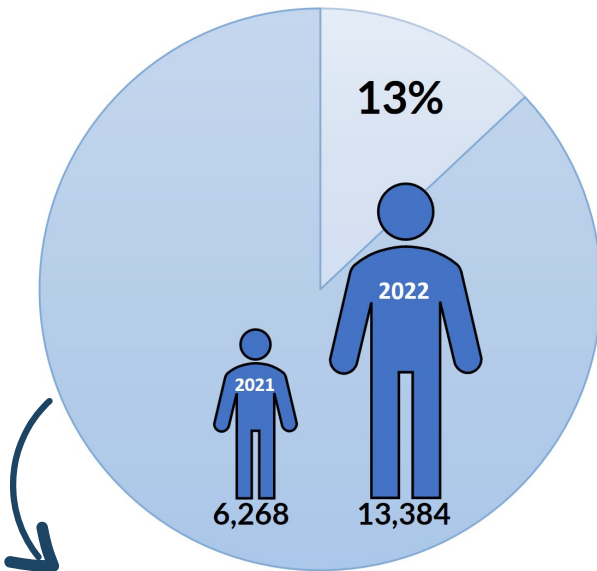
Rural America is a great place for mission-minded health professionals to provide individualized care.



Graduates of osteopathic medical schools, rural schools, and schools with a rural mission are more likely to choose rural primary care practice. All schools can improve by adopting rural missions and supporting those missions through programs and curricula that encourage rural practice.^{vi}



Compared to urban nurse practitioners, rural NPs report being **more satisfied** with their jobs, fully practicing to the extent of their license and anticipate staying in their jobs much longer.^{viii}



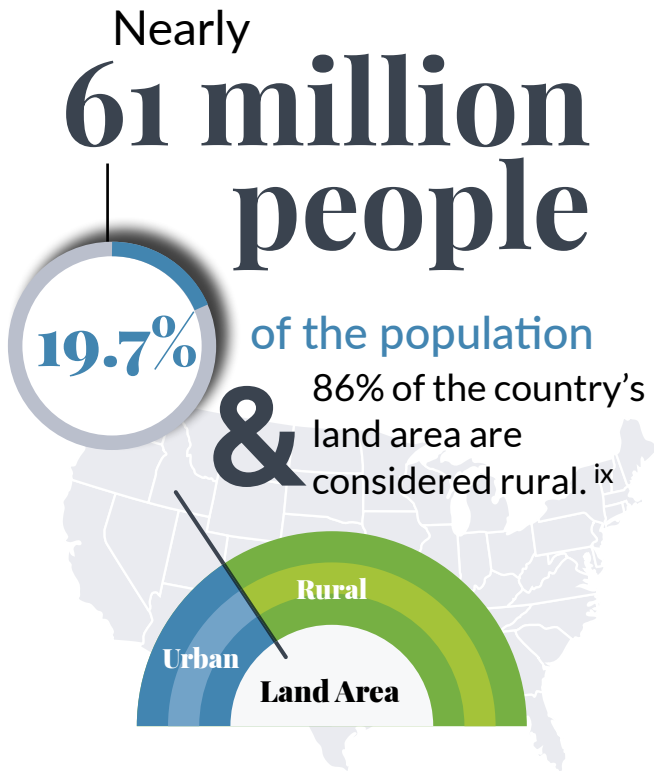
From 2020 to 2021, the number of **students from a rural background in federal pipeline programs** rose from 6,268 to 13,384 (114%). However, this remains only 13% of all students (101,682) in federal pipeline programs.^{vii}

Rural children are more likely to volunteer in their community, school or church and have greater odds of having a mentor for advice or guidance compared to urban children.^v



KEY MESSAGE

Rural America offers a beautiful and challenging landscape, requiring unique approaches.

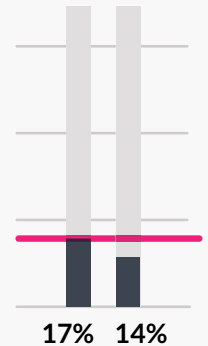


Rural minorities

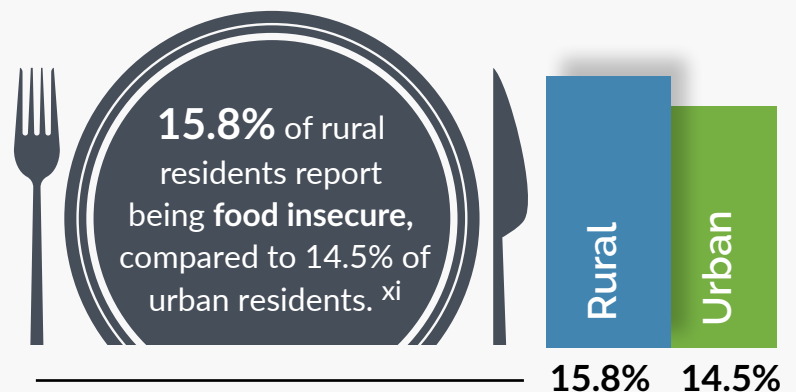
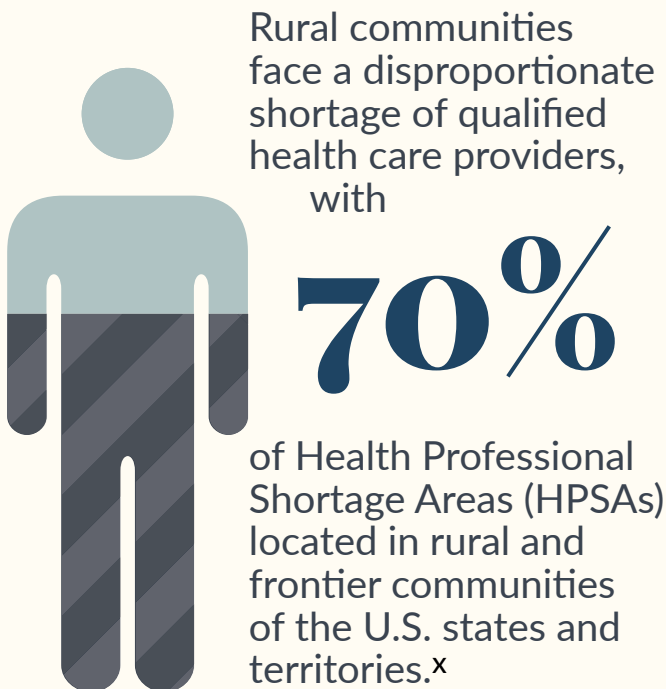
(Black, Indigenous and People of Color [BIPOC] and Latinx communities) have even higher rates of poverty and obesity, as well as lower educational attainment, than rural White and urban children.^{xii xiii xiv}



The median annual household income of rural residents is lower than urban residents,

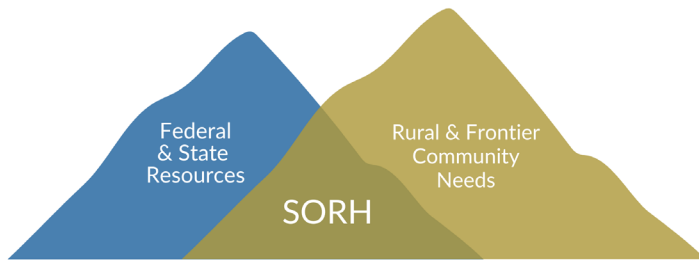


with 17% of rural residents living at or below the poverty line, compared to 14% in urban.^{xi}



Food Insecurity

State Offices of Rural Health: Your partners to grow communication, education, collaboration and innovation in rural health.



No other resource does the work of a SORH

State Offices of Rural Health (SORH) are the only statewide organizations designed to work at the local level, linking federal and state resources to rural and frontier community needs.

These partners are a true part of your state:

37

SORH are part of a state health department,

10

are part of a state institution of higher learning,

3

are non-profit organizations.

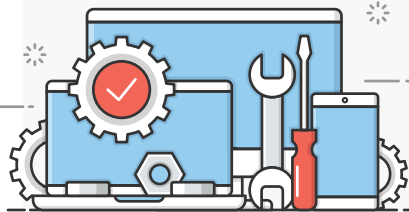
SORH provided over

93,000

instances of technical assistance to over

26,500

rural stakeholders in 2021.^{xv}



More than 1.5 million Americans accessed SORH webpages,



nearly 65,000 subscribed to SORH distribution lists,



and more than 54,000 subscribed to SORH newsletters.^{xvi}

How to find your partner:



Learn more about the SORH by visiting www.nosorh.org

Sources

- ⁱ Pink G, Howard H. *Types of Rural and Urban Hospitals and Counties Where They Are Located*. NC Rural Health Research Program, UNC Sheps Center. July 2022. Accessed 7/3/23 from <https://www.shepscenter.unc.edu/product/types-of-rural-and-urban-hospitals-and-counties-where-they-are-located/>
- ⁱⁱ HRSA Data Warehouse (2023). Explore health sites. Accessed 7/3/2023 from <https://data.hrsa.gov/data/dashboards/sites>
- ⁱⁱⁱ David, H., Gale, J.A., Leighton, Al, & Bratesman, S. (2010). *Are rural health clinics part of the rural safety net?* Accessed 7/3/2023 from <https://digitalcommons.usm.maine.edu/cgi/viewcontent.cgi?article=1006&context=clinics>
- ^{iv} National Association of City and County Health Officials (2019). National Profile of Local Health Departments. Accessed 7/3/2023 from https://www.naccho.org/uploads/downloadable-resources/Programs/Public-Health-Infrastructure/NACCHO_2019_Profile_final.pdf
- ^v Crouch, E., Radcliff, E., Merrell, M. A., & Bennett, K. J. (2021). Rural-Urban Differences in Positive Childhood Experiences Across a National Sample. *The Journal of Rural Health*, 37(3), 495–503. <https://doi.org/10.1111/jrh.12493>
- ^{vi} Longenecker, R.L., Andrilla, C.H.A., Jopson, A.D., Evans, D.V., Schmitz, D., Larson, E.H. and Patterson, D.G. (2021), Pipelines to Pathways: Medical School Commitment to Producing a Rural Workforce. *The Journal of Rural Health*, 37: 723-733. <https://doi.org/10.1111/jrh.12542>
- ^{vii} HRSA Data Warehouse (2022). Explore health professions training programs. Accessed 7/3/2023 from <https://data.hrsa.gov/topics/health-workforce/training-programs>
- ^{viii} Spetz, J., Sillman, S.M., Andrilla, H.A. (2017). Nurse practitioner autonomy and satisfaction in rural settings. *Medical Care Research and Review*. 72(2). <https://doi.org/10.1177%2F1077558716629584>
- ^{ix} Federal Office of Rural Health Policy (2022). Defining rural population. Accessed 7/3/23 from <https://www.hrsa.gov/rural-health/about-us/what-is-rural>
- ^x HRSA Data Warehouse (2022). Explore HPSAs. Accessed 7/3/2023 from <https://data.hrsa.gov/topics/health-workforce/shortage-areas>
- ^{xi} Schroeder, S. (2018). Rural communities: Age, income, and health status. Accessed 7/3/2023 from <https://www.ruralhealthresearch.org/assets/2200-8536/rural-communities-age-income-health-status-recap.pdf>
- ^{xii} Probst, J. C., & Fozia, A. (2019). Social determinants of health among the rural African American population. Accessed 7/3/23 from https://sc.edu/study/colleges_schools/public_health/research/research_centers/sc_rural_health_research_center/documents/socialdeterminantsofhealthamongtheruralafricanamericanpopulation.pdf
- ^{xiii} Probst, J. C., & Fozia, A. (2019). Social determinants of health among the rural Hispanic population. Accessed 7/3/23 from https://sc.edu/study/colleges_schools/public_health/research/research_centers/sc_rural_health_research_center/documents/socialdeterminantsofhealthamongtheruralhispanicpopulation.pdf
- ^{xiv} Probst, J. C., & Fozia, A. (2019). Social determinants of health among the rural American Indian and Alaska Native populations. Accessed 7/3/23 from https://sc.edu/study/colleges_schools/public_health/research/research_centers/sc_rural_health_research_center/documents/socialdeterminantsofhealthamongruralamericanindianandalaskanativepopulations.pdf
- ^{xv} Department of Health and Human Services (2022). Fiscal Year 2023, HRSA Justification of Estimates for Appropriations Committees. Retrieved 7/3/23 from <https://www.hrsa.gov/sites/default/files/hrsa/about/budget/budget-justification-fy2023.pdf>
- ^{xvi} State Offices of Rural Health (SORH) Performance Improvement Measurement System (PIMS) (2023). Accessed 7/3/23 from https://8044ba.p3cdn1.secureserver.net/wp-content/uploads/2023/06/2023-SORH-PIMS_6-27-23.pdf