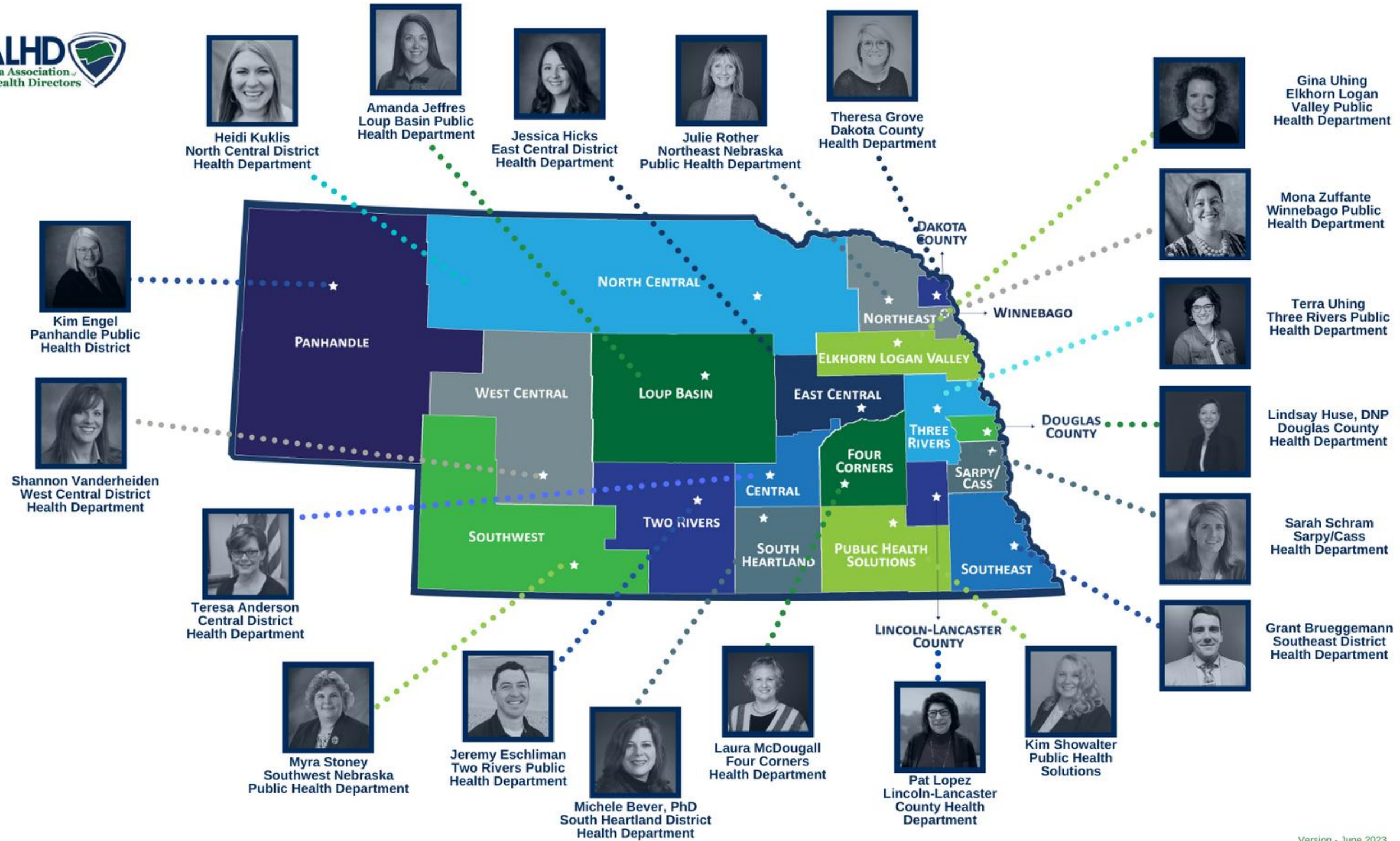


NALHD

Nebraska Association *of*
Local Health Directors



Working together toward an exemplary,
collaborative local public health system in Nebraska



Version - June 2023

A statewide system working to make The Good Life a healthy one, for everyone in Nebraska

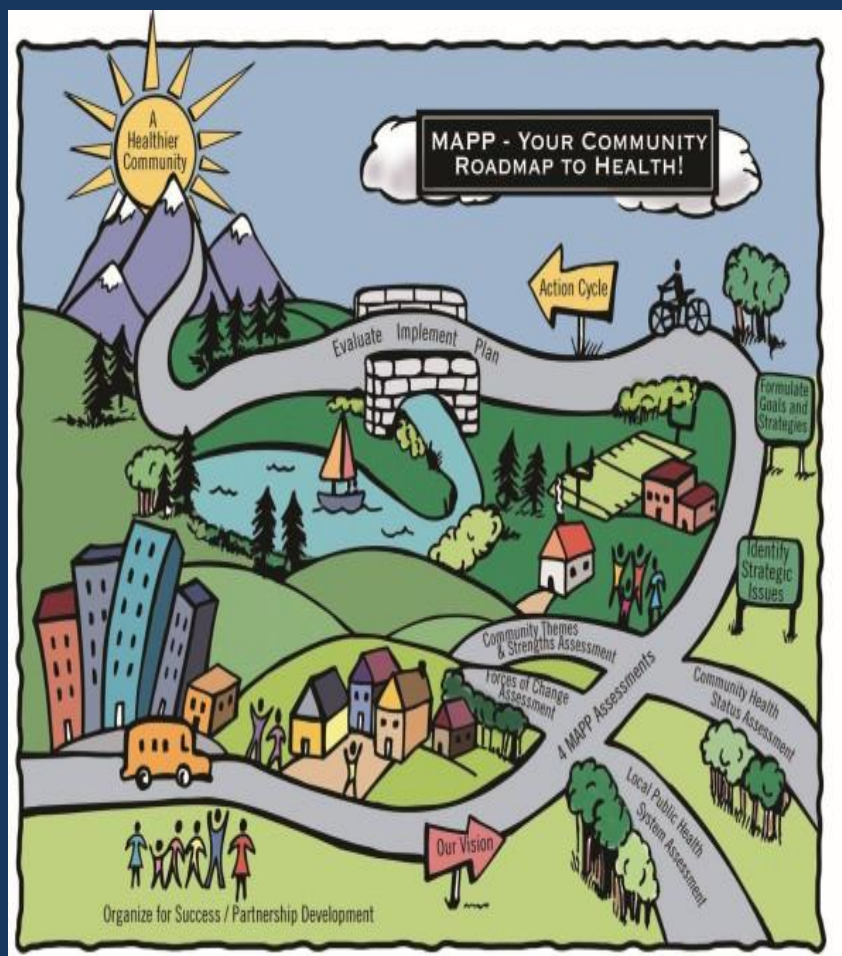
Public Health in Nebraska

Public health is the science of protecting and improving the health of people and their communities (CDC)

Local Health Departments in Nebraska are “decentralized.”

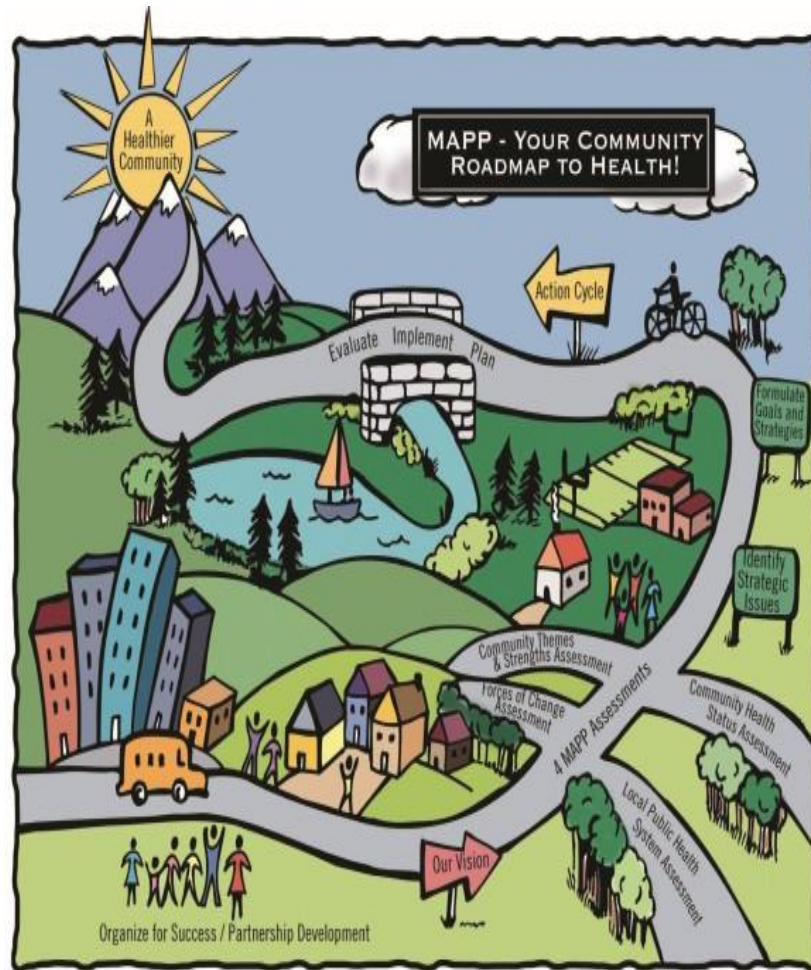
Each Department

- Functions independently and according to State Statute
- Has its own Board of Health – Governing board – meets a minimum of 4 times a year, but ideally 6 times
- Determines its own priorities
- Forms contracts and agreements individually
- Is a member of Nebraska Association of Local Health Directors



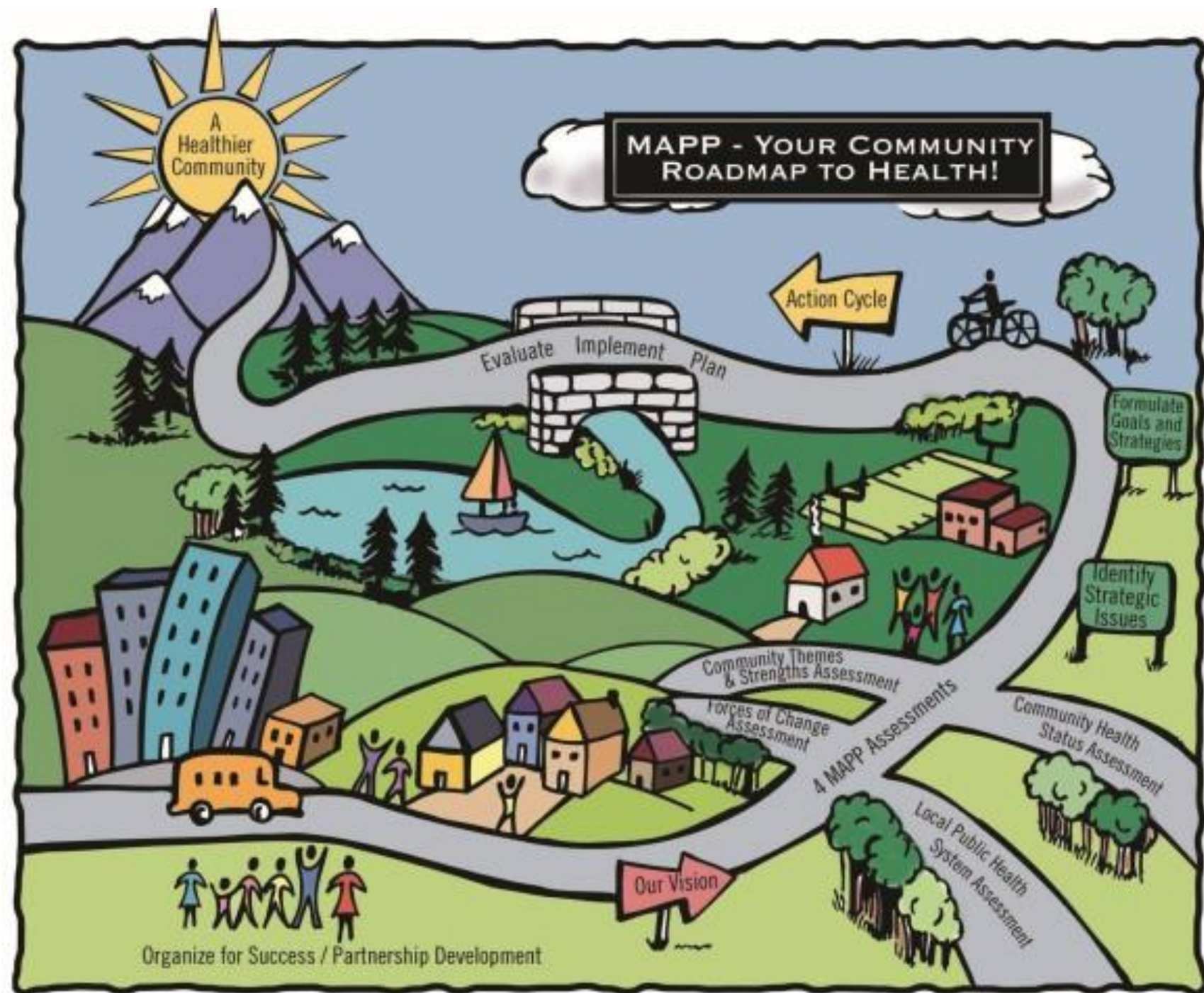
Six Functions of the Board of Health

Developed by the National
Association of Local Boards of Health



1. Policy Development
2. Resource Stewardship
3. Legal Authority
4. Partner Engagement
5. Continuous Improvement
6. Oversight

See hand out for definitions of each of these.



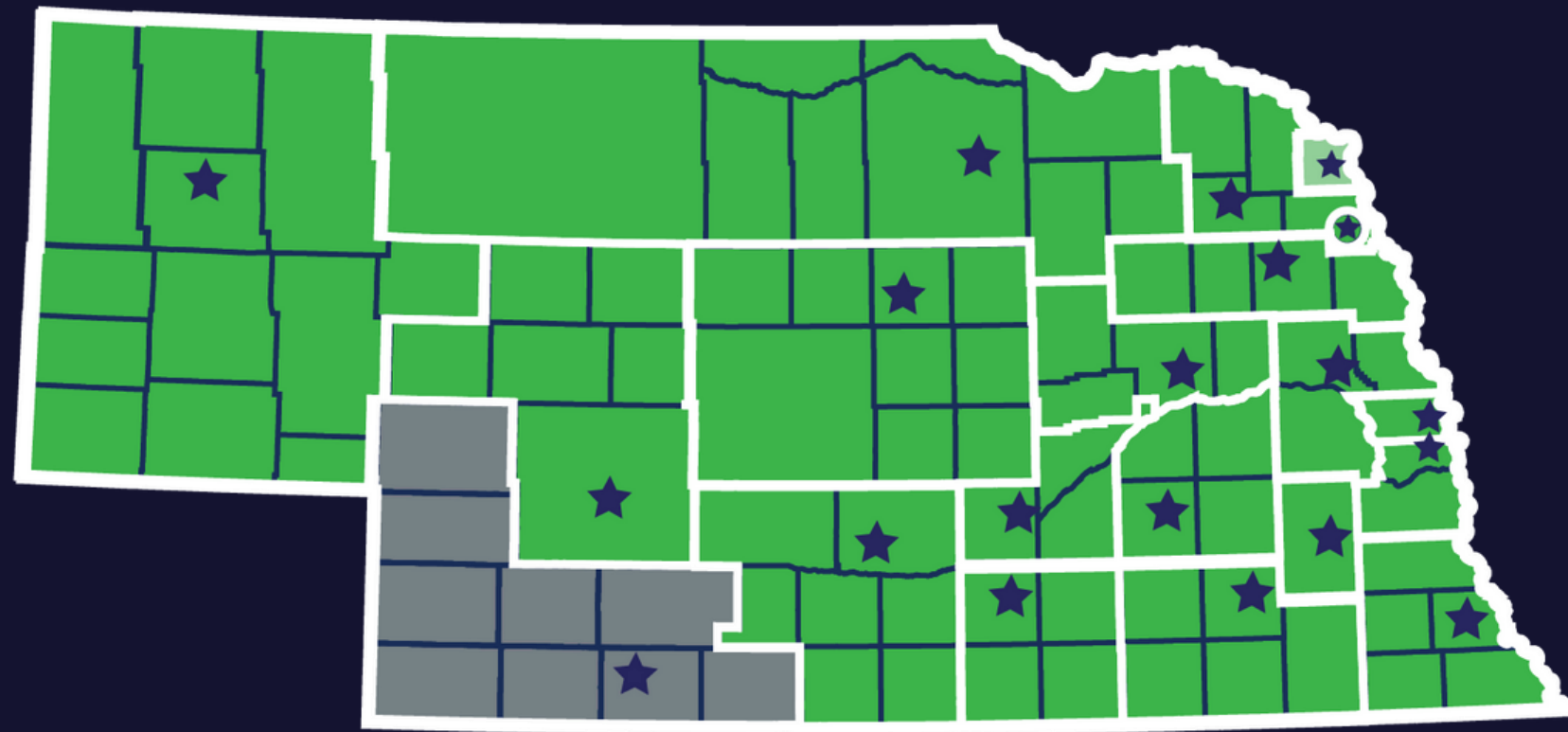
COMMUNITY HEALTH IMPROVMENT PLANS DRIVE LOCAL HEALTH DEPARTMENTS' STRATEGIES.

Community Health Needs Assessments completed in partnership with local hospitals and other partners.

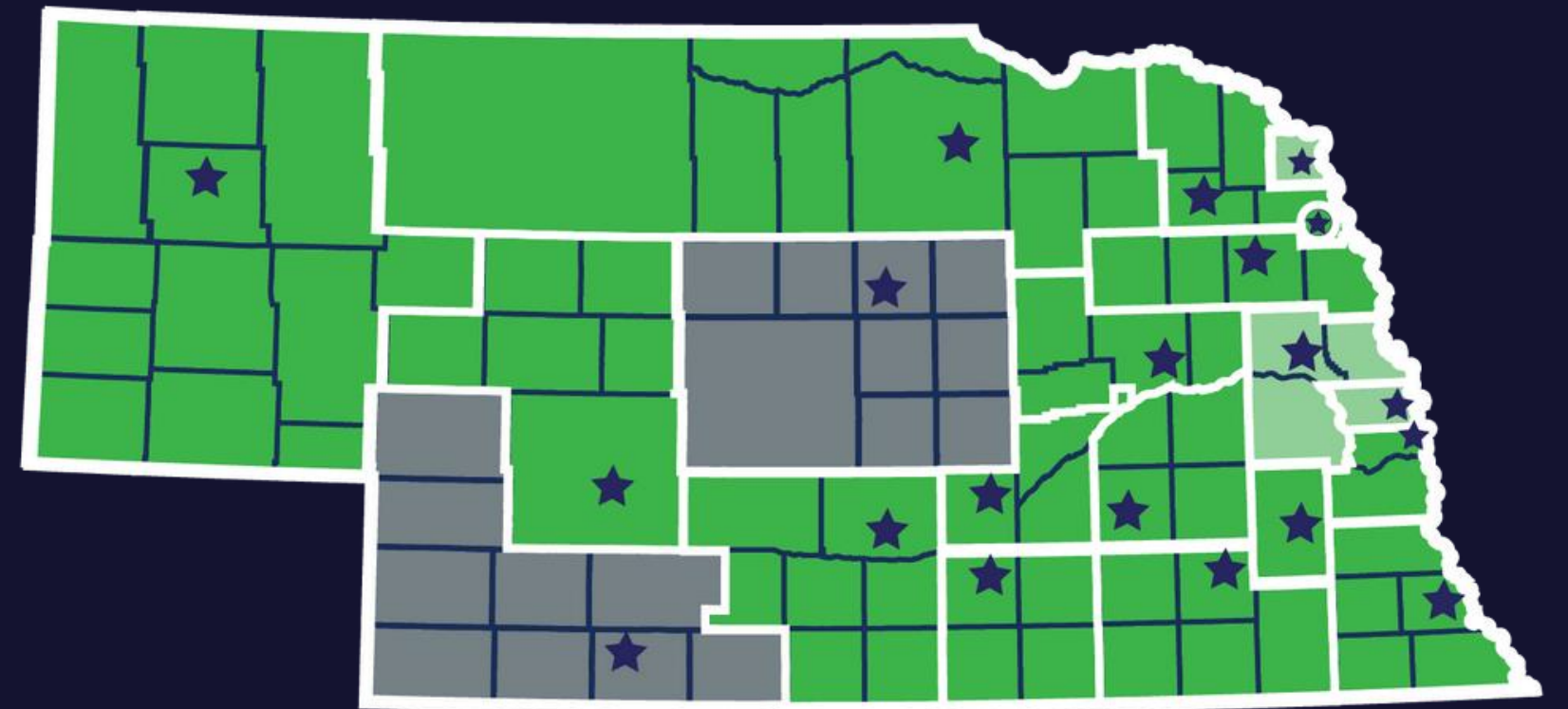
3-year to 5-year cycles.

Priorities include: Access to care, behavioral health, cancer prevention and screening, quality childcare, chronic disease, cardiovascular health, housing, and others.

Behavioral Health Priority



Substance Misuse Prevention Priority



 Actively providing

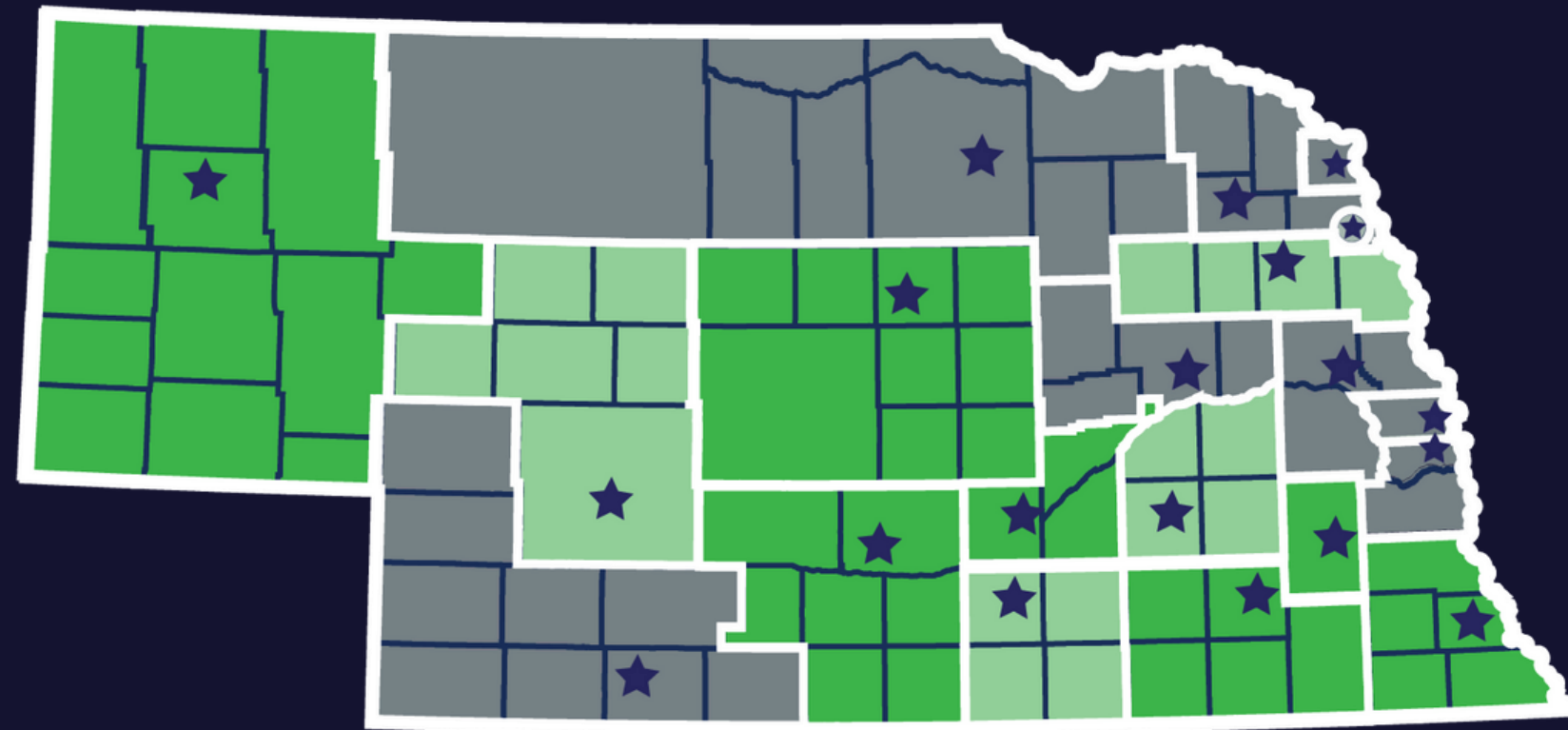
 Plan in place to provide in the future




 No plan to provide



A ready-made statewide network of expert community partners.

Healthy Families America



-  Actively providing
-  Plan in place to provide in the future
-  No current plan to provide



A growing statewide network of expert community partners.



LIFELONG HEALTH AND WELLBEING OF MOMS, DADS, AND THEIR YOUNG CHILDREN

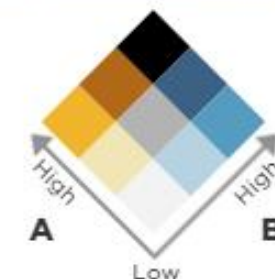
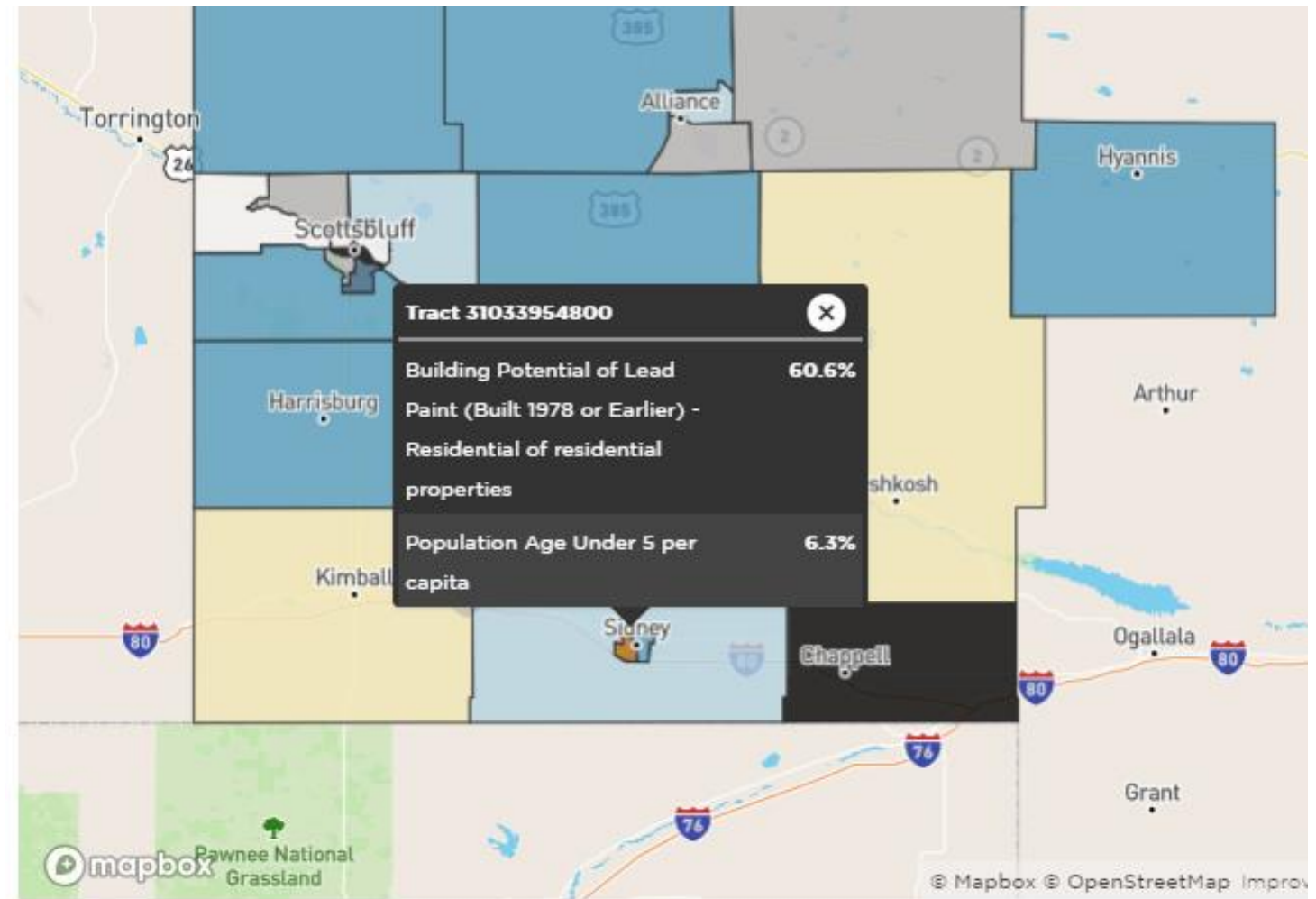
Healthy Families America:
Evidence-based home visitation
program utilizing Family Support
Specialists
Early pregnancy and continuing to
age 3

- Strengthens parent-child relationships
- Reduces child maltreatment by 1/3
- Promotes healthy child development
- Enhances family well-being

LHDs INVESTIGATE CASES OF ELEVATED LEAD LEVELS TO REDUCE HARM TO THE DEVELOPING BRAINS OF BABIES AND YOUNG CHILDREN

Panhandle Public Health District's certified Lead Risk Assessors work with families of children with high lead levels and offer specialized testing to find the source. They help families reduce or eliminate the risk of ongoing exposure for all babies and children in a household.

*Environmental Health Expansion:
Coming Soon to a health department near you!



- A** Building Potential of Lead Paint (Built 1978 or Earlier) - Residential of residential properties
- B** Population Age Under 5 per capita

Sources: County Tax Assessors 2021; US Census Bureau ACS 5-year 2017-2021

ORAL HEALTH PREVENTION PROGRAMS PROVIDE SCREENINGS AND EDUCATION IN COMMUNITY SETTINGS

94% of Panhandle schools participate in the program.

Overall participation rate = 57%

Services provided in school year 2022/2023:

- Dental screenings 4,164
- Fluoride treatments 5,182
- Sealants 1,379
- Dental Presentations 70 (1,497 individuals)





Thank you!

Kim Engel, Director
Panhandle Public Health District