

COUNTY ASSESSMENTS

DEPARTMENT OF HEALTH & HUMAN SERVICES

November 13, 2018

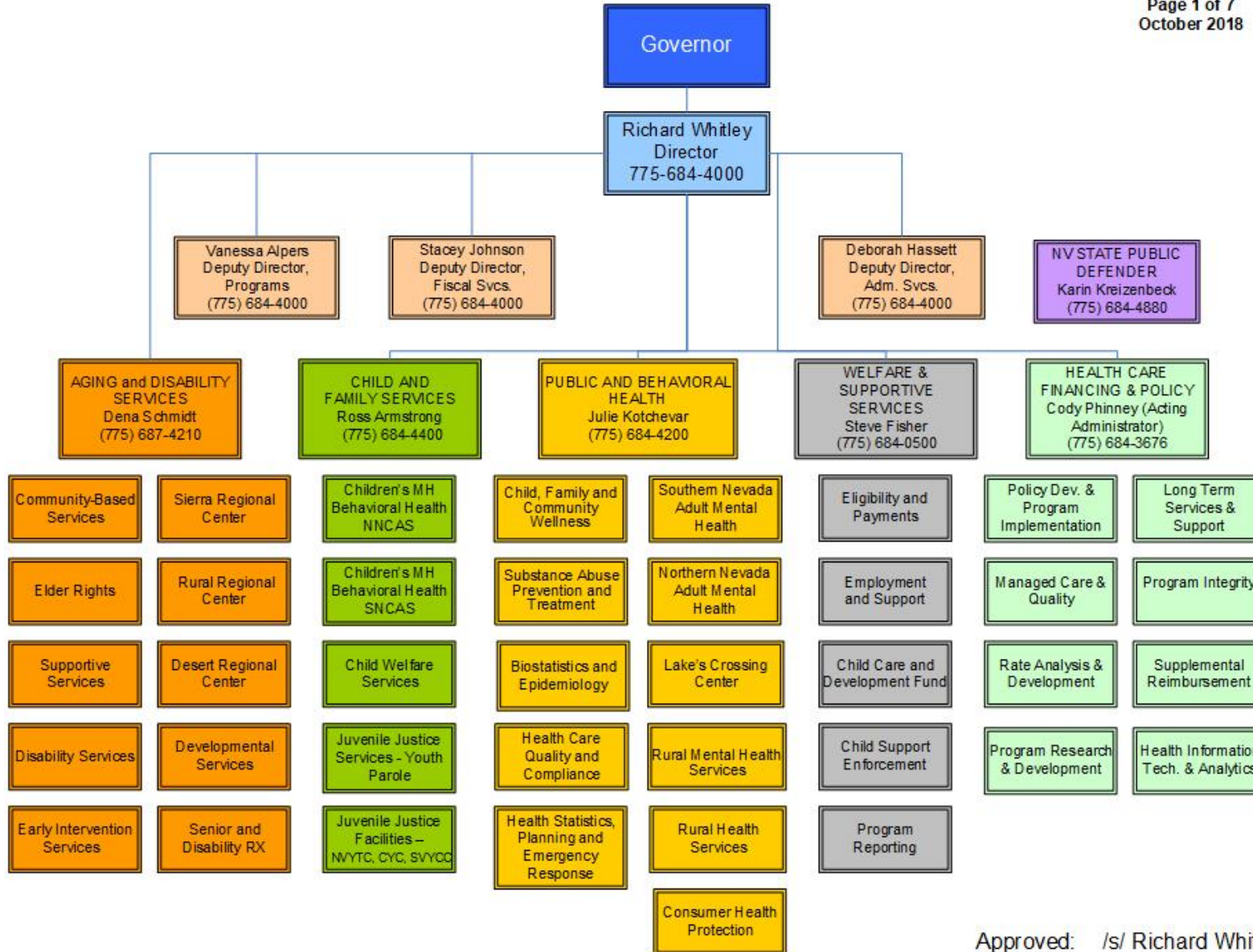
DHHS Mission

- ▶ The Department of Health and Human Services (DHHS) promotes the health and well-being of Nevadans through the delivery of essential services to ensure families are strengthened, public health is protected, and individuals achieve their highest level of self-sufficiency.
- ▶ The department consists the following divisions: Aging and Disability Services, Child and Family Services, Health Care Financing and Policy, Public and Behavioral Health, Welfare and Supportive Services, and the Public Defender's Office.
- ▶ Statutory Authority: NRS 232.290-465.

Helping People. It's who we are and what we do.

DEPARTMENT OF HEALTH AND HUMAN SERVICES

Department of Health & Human Services
 Director's Office
 Divisions
 Page 1 of 7
 October 2018



Current County Assessments

- ▶ ADSD - Developmental Services
- ▶ DCFS - Youth Parole Services
- ▶ DCFS - Youth Alternative Placement
- ▶ DCFS - Child Protective Services
- ▶ DPBH - Environmental Health Section
- ▶ DPBH - Community Health Services
- ▶ DPBH - TB Medical Care
- ▶ DPBH - STI Medical Care
- ▶ DPBH - Lakes Crossing
- ▶ DHCFP - County Match Program
- ▶ DHHS Director's Office - Public Defender

ADSD - Developmental Services

Description/Purpose

- ▶ The three regional centers (Rural, Desert, and Sierra) provide services and support to individuals with intellectual and developmental disabilities. Rural Regional's service area encompasses all of Nevada with the exception of Washoe County and the Las Vegas area. Desert Regional's service area encompasses the Las Vegas area in Clark county. Sierra Regional's service area encompasses Washoe County. Services provided include Targeted Case Management (Service Coordination) as well as respite, residential, clinical, nursing, job supports, and coordination with community resources.

Authority/Methodology

- ▶ NRS 435.010 allows Aging and Developmental Services to receive reimbursement for the costs of services to children from the county of residence of their custodial parent. For all Rural counties, quarterly assessments are invoiced to each county based on the previous year's actual costs of services with an end of year settle-up to match current year's costs. For Clark and Washoe counties, costs are based on the actual cost of the services provided.

DCFS - Youth Parole Services

Description/Purpose

- ▶ The Division of Child and Family Services provides supervision and case management services to youth committed to the Youth Parole Bureau following adjudication of a delinquent act.

Authority/Methodology

- ▶ NRS 62B.165 allows the Division of Child and Family Services to assess each county to support half of the costs incurred for the Youth Parole Bureau. The assessment is calculated by subtracting revenue received from Child Support and Medicaid from the total expenditures budgeted for the operation of the Youth Parole Bureau. The remaining expenses are split 50 percent to county assessments and 50 percent to General Fund appropriations. Each county is assessed based on their proportionate number of pupils enrolled in grades 7 through 12 in public schools in the preceding school year, as reported by the Department of Education.

DCFS - Youth Alternative Placement

Description/Purpose

- ▶ The Division of Child and Family Services provides financial support to each regional facility for the treatment and rehabilitation of children partially supported by the state and is operated by a county whose population is less than 700,000. Two regional facilities in Douglas County-China Spring Youth Camp and Aurora Pines Youth Camp-are currently the only two regional facilities that qualify and are partially supported with pass-through county assessment funding received by the division.

Authority/Methodology

- ▶ NRS 62B.150 allows the Division of Child and Family Services to assess all counties with a population less than 700,000 to support the regional facilities for the treatment and rehabilitation of children partially supported by the state. The assessment amount is based on the Legislatively approved amount, and any changes with the split between state General Fund appropriations is typically negotiated between the participating counties and all interested parties prior to approval. Each county is assessed based on their proportionate number of pupils enrolled in all schools in the preceding school year, excluding pupils in counties with a population of 700,000 or more, as reported by the Department of Education.

DCFS – Child Protective Services

Description/Purpose

- ▶ The Division of Child and Family Services provides direct child protective services to the 15 rural counties in Nevada. Child protective services staff respond to reports of abuse or neglect of children under the age of 18 and perform intake functions, investigations, and complete case findings to determine whether there is reasonable cause to believe that a child is abused or neglected or threatened with abuse or neglect.

Authority/Methodology

- ▶ NRS 432B.326 allows the Division of Child and Family Services to assess counties whose population is less than 100,000 for child protective services. The assessment is calculated by the time spent by staff on child protective service activities, including salaries and proportional operating expenditures. Each county is assessed based on their proportionate number of children ages 0-17 as estimated by the State Demographer.

DPBH - Environmental Health Section

Description/Purpose

- ▶ Environmental Health Section (EHS) provides health inspections for counties pursuant to chapters 439 (Administration of Public Health), 444 (Sanitation), 446 (Food Establishments) and 583 (Meat, Fish, Poultry and Eggs) of NRS. EHS focuses on prevention of disease through sanitation, safe food and water, proper disposal of wastes, and promoting safe and healthy environmental conditions throughout Nevada.

Authority/Methodology

- ▶ NRS 439.4905 allows the Division of Public and Behavioral Health to collect a fee from participating counties for services rendered. The Environmental Health Section (EHS) was approved for the Capped Assessment Amount of \$592,426.00. This amount was originally calculated using a combination of Agency Personnel Costs, Operating Costs for County Programs, and In-State Travel Costs to provide public health services in participating counties. Each County contributes a proportionate amount of the assessment total to the Division every quarter of the financial year. The Environmental Health Program Manager conducts an annual inventory of consumer protection establishments which is used to re-calculate the amounts assessed based on the percentage of food establishments permitted in each county. That percentage is applied to the assessment total to calculate the annual amount to be assessed for each participating county.

DPBH - Community Health Services (CHS)

Description/Purpose

- ▶ Community Health Services (CHS) provides mandated public health services on behalf of 12 rural and frontier counties in Nevada (Churchill, Elko, Esmeralda, Eureka, Humboldt, Lander, Lincoln, Lyon, Mineral, Nye, Pershing, and White Pine). Services include conducting investigations of infectious diseases, including reports to the State Chief Medical Officer; testing, control, treatment and referral to prevent spread of disease; vaccination clinics related to serious outbreaks of infectious diseases; and participation in preparedness activities at a county level, such as Point of Dispensing exercises.

Authority/Methodology

- ▶ NRS 439.4905 allows the Division of Public and Behavioral Health to collect a fee from participating counties for services rendered. The counties are charged and receive only the mandatory services listed. The fee is calculated using a combination of state personnel costs, county program and operating costs, and a contribution to the Rural Electronic Health Record System.

DPBH - CHS - TB Medical Care

Description/Purpose

- ▶ To assure counties are prepared to address a potential tuberculosis outbreak, CHS participates in local emergency preparedness committees, points of dispensing exercises, board of health meetings at a county level, and vaccine clinics separate from the routine child and adult wellness care vaccine clinics.

Authority/Methodology

- ▶ NRS 439.4905 allows the Division of Public and Behavioral Health to collect a fee from participating counties for services rendered. If there is an expansive tuberculosis outbreak, the affected counties pay for supplies outside of the established county assessment.

DPBH - CHS - STI Medical Care

Description/Purpose

- ▶ To assure counties are prepared to address a potential outbreak of sexually transmitted infections (STI), CHS participates in local emergency preparedness committees, points of dispensing exercises, board of health meetings at a county level, and vaccine clinics separate from the routine child and adult wellness care vaccine clinics.

Authority/Methodology

- ▶ NRS 439.4905 allows the Division of Public and Behavioral Health to collect a fee from participating counties for services rendered. If there is an expansive STI outbreak, the affected counties pay for supplies outside of the established county assessment.

DPBH - Lake's Crossing Center

Description/Purpose

- ▶ Lake's Crossing Center provides evaluation of competency to stand trial for Nevada Counties under NRS 178.415. These evaluations must be completed by individuals who are certified to complete these evaluations as stated in NRS 178.417. Lake's Crossing Center evaluators are all certified, licensed clinicians. Lake's Crossing Center also completes Risk Assessments, Criminal Responsibility Assessments, and Mental Health Evaluations, all of which can include a need for standardized psychological testing. Frequently, clinicians are subpoenaed to provide testimony regarding these evaluations.

Authority/Methodology

- ▶ The evaluation fee is calculated based on a flat rate per evaluation. Rates were determined based on state personnel costs and the average time spent to conduct evaluations or assessments. Witness testimony and other standardized testing are billed by the hour.

DHCFP – County Match Program

Description/Purpose

- ▶ County Match program is a joint county/state/federal program in which the county provides the non-federal share of the cost of medical services for eligible county residents. The Division of Health Care Financing and Policy (DHCFP) draws in the federal match for these services, which is approximately 65% of the total costs.
- ▶ This program helps mitigate county costs for providing medical services to low income residents who were traditionally served by the county.
- ▶ When a person becomes eligible under a County Match aid code, that person is issued a Medicaid card.
- ▶ The county of residence pays the non-federal share of costs for providing services to the County Match clients.
 - ▶ This includes the cost of services, Medicare premiums, program administration, and claims processing.
 - ▶ Any credits associated with the Medicaid Estate Recovery (MER) are processed on the appropriate county invoice to offset monthly charges.

Authority

- ▶ NRS 428.285(4) and NRS 422.272

DHCFP – County Match Program

Traditional Population

- ▶ The Division of Welfare and Supportive Services determines eligibility for the County Match Program.
- ▶ The Traditional Population includes:
 - ▶ County residents who have been admitted to a hospital or skilled/intermediate nursing facility for not less than 30 consecutive days, and
 - ▶ Have incomes between 156% and 300% of the Federal Benefit Rate (FBR), roughly \$1,147 - \$2,212 per month.
- ▶ Counties pay the non-federal share of all expenditures for the Traditional Population.

DHCFP – County Match Program

New Population

- ▶ County Match Program was extended to home and community based waiver clients, in addition to an expansion of the income level to the traditional population during the 2011 Legislative Session.
- ▶ The New Population includes:
 - ▶ Clients in long-term care facilities with incomes between 142% and 156% FBR, \$1,044 - \$1,146 per month.
 - ▶ Waiver recipients between 142% and 300% FBR, \$1,1044 - \$2,212 per month.
- ▶ For the New Population, counties are responsible for paying the Legislatively Approved non-federal share of expenditures. The non-federal share of expenditures above this amount is paid with state general funds.

DHCFP – County Match Program

Methodology

1. Each month DHCFP receives a list of eligible clients and responsible county from DWSS.
2. Medical costs
 1. DHCFP identifies claims for these clients and computes the total costs.
 2. FMAP is applied to identify the non-federal (county) share of costs.
3. Medicare Buy-In
 1. DHCFP identifies dual eligible clients and the cost of their Medicare Part B and Part D premiums.
 2. Counties pay 100% of the buy-in costs.

DHCFP – County Match Program

Methodology (cont.)

4. Medical Services Credits

1. Medicaid estate recovery (MER): Per federal law, the Medicaid program must seek repayment from the estates of certain deceased Medicaid recipients.
2. FMAP is applied to the recoveries from this program to identify the credit to be applied to the county's assessment.

5. Administrative Costs

1. Number of claims for these clients times 50% of the fiscal agent per claim cost,
2. *Plus* number of claims for these clients times 25% of the MMIS per claim costs,
3. *Plus* 50% of DWSS administration costs per client times number of clients,
4. *Plus* 50% of DHCFP administration costs per client times number of clients.

DHCFP – County Match Program

Methodology (cont.)

- ▶ The sum of 1-5 is the county share due each month.
- ▶ Per NRS 428.285(4), counties with populations below 100,000 are not required to tax more than 8 cents on each \$100 of assessed valuation of all taxable property in the county. Therefore, the total assessment amount cannot exceed a county's 8 cent cap.

DHHS Director's Office - Public Defender

Description/Purpose

- The Public Defender's Office provides equal protection under the law in accordance with the United States Constitution and the Nevada Constitution by representing indigent adults and juveniles accused of committing crimes in certain rural counties of Nevada. This representation is performed from arrest through trial, sentencing, and appeal. Currently only Carson City and Storey County participate.

Authority/Methodology

- NRS 180.110 allows the Public Defender's Office to collect a fee from participating counties for services rendered. The fee is calculated using a five year historical average of staff time and effort.

Legislatively Capped Assessments

➤ Potential Assessment Variance

Assessment	Less than Leg. Approved	Equal to Leg. Approved	More than Leg. Approved
ADSD - Developmental Services	X	X	X
DCFS - Youth Parole Services	X	X	
DCFS - Youth Alternative Placement		X	
DCFS - Child Protective Services		X	
DPBH - Consumer Health Protection	X	X	
DPBH - Community Health Nursing	X	X	X
DPBH - TB Medical Care	X	X	X
DPBH - STD Medical Care	X	X	X
DPBH - Lake's Crossing	X	X	X
DHCFP - County Match Program Traditional Population	X	X	X
DHCFP - County Match Program New Population	X	X	
DHHS Director's Office - Public Defender	X	X	X

Contacts

- ▶ ADSD – Robin Williams
 - ▶ Phone: (775) 687-0948
 - ▶ Email: robinw@rrc.nv.gov
- ▶ DCFS – Mandi Davis
 - ▶ Phone: (775) 684-7942
 - ▶ Email: Mandi.Davis@dcfs.nv.gov
- ▶ DPBH – Debi Reynolds
 - ▶ Phone: (775) 684-2214
 - ▶ Email: DReynolds@health.nv.gov
- ▶ DHCFP – Ellen Crecelius
 - ▶ Phone: (775) 684-3668
 - ▶ Email: ellen.crecelius@dhcfp.nv.gov
- ▶ DIRECTOR'S OFFICE – Marianne Lockyer
 - ▶ Phone: (775) 684-4006
 - ▶ Email: mlockyer@dhhs.nv.gov