



workforce **CONNECTIONS**
PEOPLE. PARTNERSHIPS. POSSIBILITIES.

Workforce Development Resources for Counties

September 27, 2022

Irene Bustamante Adams
Deputy Director & Chief Strategy Officer

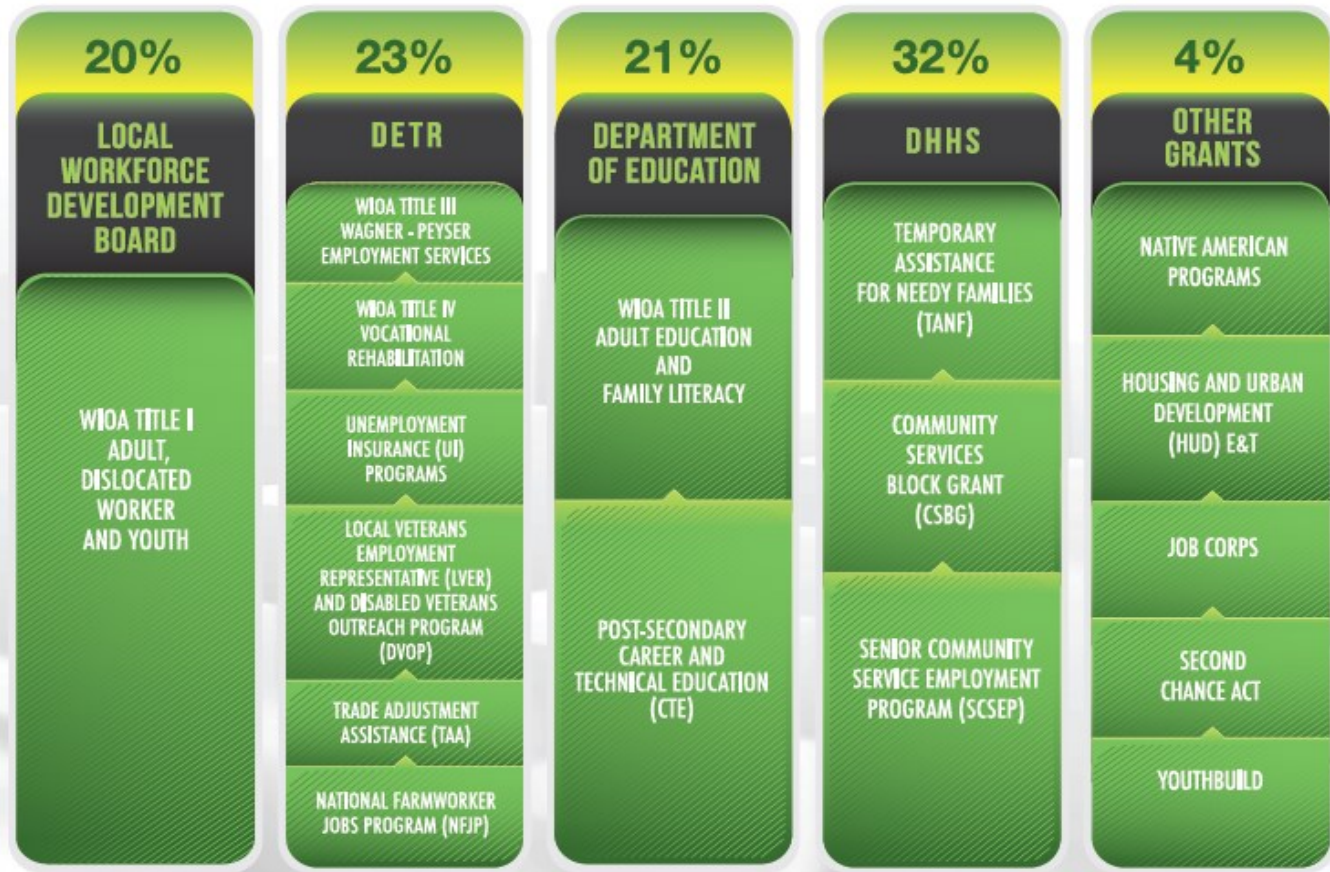


ONE-STOP PARTNER PROGRAMS

PERCENTAGE
OF SYSTEM
RESOURCES →

OVERSIGHT
AGENCIES →

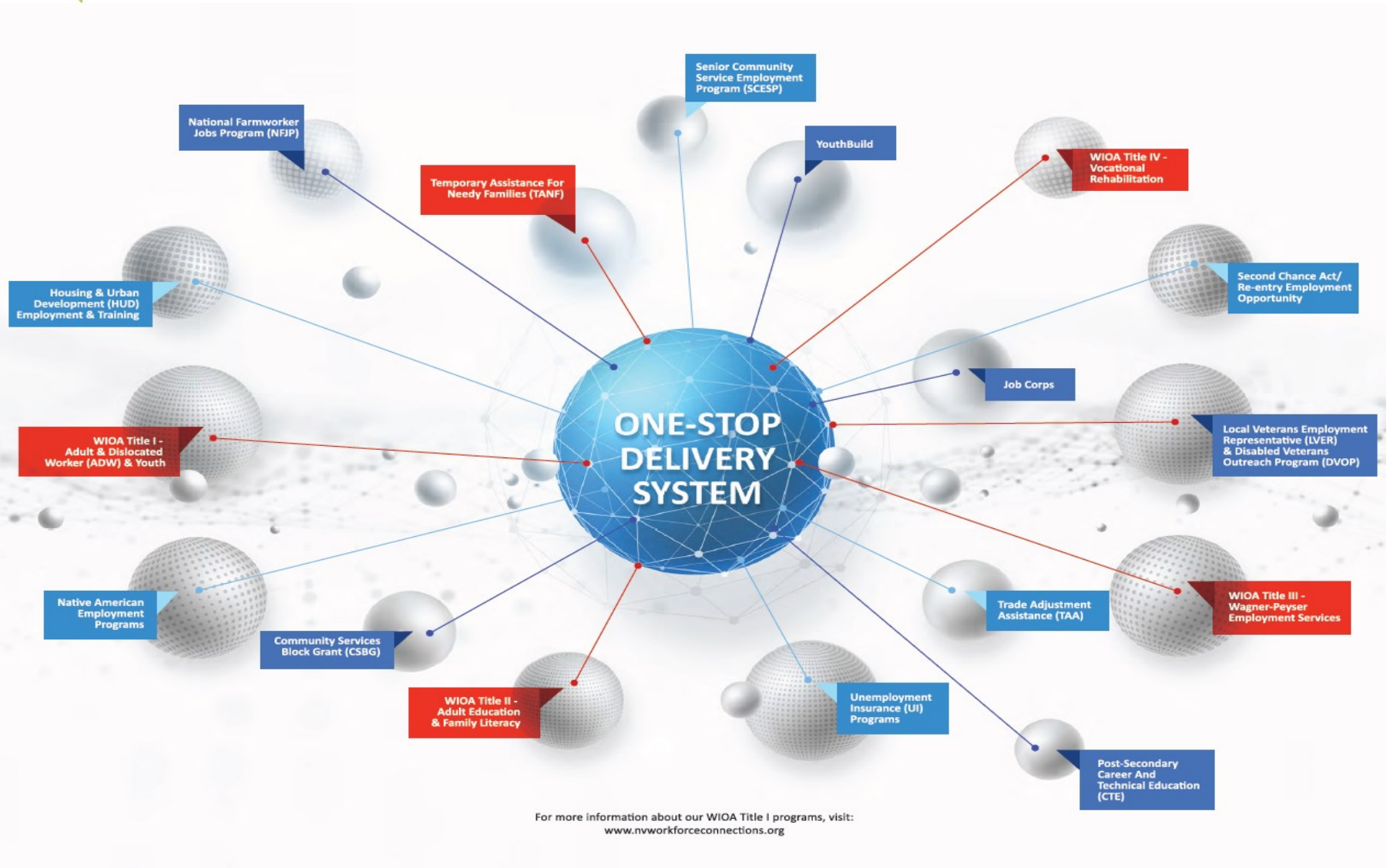
PARTNER
PROGRAMS →





workforce CONNECTIONS

PEOPLE. PARTNERSHIPS. POSSIBILITIES.





workforce **CONNECTIONS**
PEOPLE. PARTNERSHIPS. POSSIBILITIES.

Workforce Connections Primary Roles





Who We Serve

- Unemployed & Under-employed
- Persons with Disabilities
- Veterans
- Re-entry
- Youth with Barriers to Employment
- Employers





Serving Employers

- **EmployNV Business Hubs** (6 throughout Clark County) to connect employers to workforce system
- **Industry Sector Partnerships** (7 in-demand target industries) to engage industry representatives in identifying and addressing their workforce needs



Ways WC has Helped Counties with Job Seekers

- Provides labor market information and job search assistance
- Assist individuals with employment related items (e.g., tools, work cards, clothing, gas vouchers)
- Provides work-based learning opportunities including employability skills, job shadowing, work experience, and internships
- Offers vocational and on-the-job training opportunities



Ways WC has helped Counties with Employers

- **Major Job Fairs** in conjunction with local elected officials (County Commissioners, Governor)
- **Work Ready Communities** (4 Southern Nevada counties)



workforce **CONNECTIONS**
PEOPLE. PARTNERSHIPS. POSSIBILITIES.

NORTHERN NEVADA EQUITY IN EMPLOYMENT PROJECT

A NEVADAWORKS INITIATIVE

A Good Jobs Challenge Project with Funding Provided by the
U.S. Economic Development Administration

Term of Grant: Three-year grant 9/2022-8/2025

Funding Total: \$14.9M

System Lead Entity: Nevadaworks

Focus on serving Rural Regions, Tribal Nations, Communities of Color, and Women

Backbone Industry Sectors: Manufacturing, Information Technology, Healthcare, Logistics



A little context about the grant...

- Meeting the skill development needs of employers for in-demand industries using career pathways
- Focus on equity in access to training and jobs
- Alignment to regional Comprehensive Economic Development Strategies (CEDs)
- Emphasis on service-based partnerships through community-based organizations for wrap-around services
- Continuous improvement processes for industry engagement and delivering industry credentials
- Systems change, especially to serve marginalized and underrepresented workers



workforce **CONNECTIONS**
PEOPLE. PARTNERSHIPS. POSSIBILITIES.

Thank you

Workforce Connections
Irene Bustamante Adams
Deputy Director & Chief Strategy Officer

iba@snywc.org

Office: 702-638-8750

Nevadaworks

Milt Stewart

CEO

mstewart@nevadaworks.com

(775) 284-1333